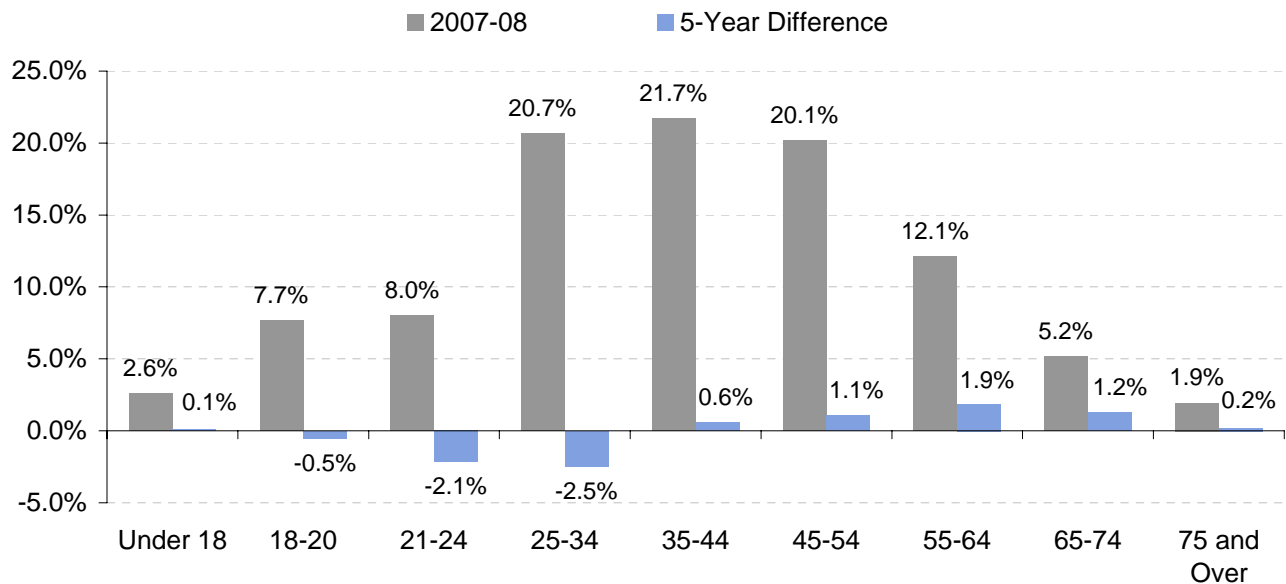


## ANNUAL CONTINUING EDUCATION ENROLLMENT BY AGE RANGE

AGE RANGE*	2003-04	2004-05	2005-06	2006-07	2007-08	5-Year % change
Under 18	241	279	261	249	259	7.5%
18-20	800	833	749	763	770	-3.8%
21-24	992	988	898	901	805	-18.9%
25-34	2263	2170	2302	2274	2078	-8.2%
35-44	2067	2146	2341	2306	2182	5.6%
45-54	1866	1880	2048	2046	2025	8.5%
55-64	1001	1068	1284	1209	1217	21.6%
65-74	384	397	434	481	520	35.4%
75 and Over	170	187	179	195	195	14.7%
<b>Total</b>	<b>9784</b>	<b>9948</b>	<b>10496</b>	<b>10424</b>	<b>10051</b>	<b>2.7%</b>

\* Age calculated as of the beginning of each academic year

### Percentage of Students Enrolled by Age Range



*The percentage of Continuing Education students age 35 and over increased during the past five years from 56% in 2003-04 to 61% in 2007-08*