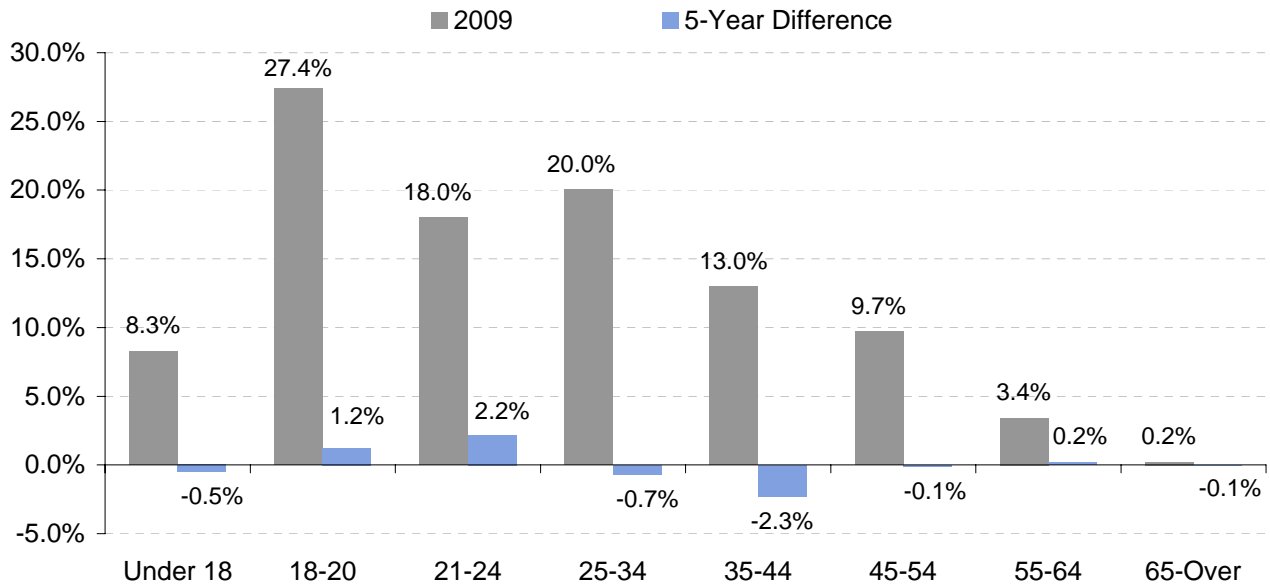


## CURRICULUM ENROLLMENT BY AGE RANGE FALL 2005-2009

AGE RANGE*	2005	2006	2007	2008	2009	5-Year % change
Under 18	390	477	465	533	454	16.4%
18-20	1164	1209	1251	1399	1504	29.2%
21-24	704	722	754	784	988	40.3%
25-34	922	884	834	842	1099	19.2%
35-44	679	654	580	574	712	4.9%
45-54	435	459	386	423	532	22.3%
55-64	143	148	155	155	187	30.8%
65 and Over	12	12	20	27	12	0.0%
<b>Total</b>	<b>4449</b>	<b>4565</b>	<b>4445</b>	<b>4737</b>	<b>5488</b>	<b>23.4%</b>

\* Age calculated as of the end of each fall semester

### Percentage of Students Enrolled by Age Range Fall Term



The percentage of Curriculum students between 18 - 24 years of age increased by 3.4% during the past five years from 42% in 2005 to 45.4% in 2009.