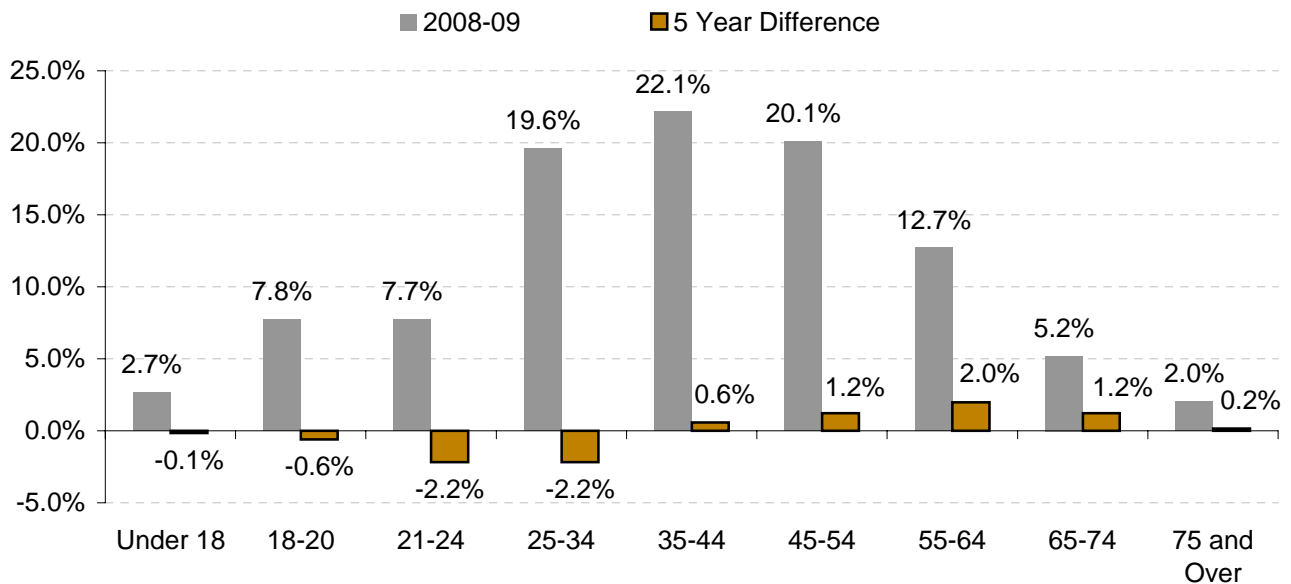


ANNUAL CONTINUING EDUCATION ENROLLMENT BY AGE RANGE

AGE RANGE*	2004-05	2005-06	2006-07	2007-08	2008-09	5-Year % change
Under 18	279	261	249	259	269	-3.6%
18-20	833	749	763	770	786	-5.6%
21-24	988	898	901	805	784	-20.6%
25-34	2170	2302	2274	2078	1987	-8.4%
35-44	2146	2341	2306	2182	2242	4.5%
45-54	1880	2048	2046	2025	2036	8.3%
55-64	1068	1284	1209	1217	1287	20.5%
65-74	397	434	481	520	527	32.7%
75 and Over	187	179	195	195	206	10.2%
Total	9948	10496	10424	10051	10124	1.8%

* Age calculated as of the beginning of each academic year

**Percentage of Students Enrolled by Age Range
2004-05 - 2008-09**



The percentage of Continuing Education students 35 and over increased 5.2% during the past five years from 57% in 2004-05 to 62.2% in 2008-09